

# Kilkenny Photographic Society

Sizing photographs for the Club  
Galleries on pbase, using Picasa.

# Background

- To prevent the club having to pay lots of money we try to control the amount of space we use on pbase.
- The main way in which we do this is by imposing limits on the size of the photo files (jpeg files) that can be uploaded.

# How is file size measured?

- File size is measured in Bytes, KiloBytes or MegaBytes.
- A KiloByte is approximately 1,000 Bytes
- A MegaByte is approximately 1,000,000 Bytes

# What are our size limits?

- In general pictures should not exceed 100 KiloBytes in size.
- Pictures bigger than 120 KiloBytes may be deleted by the committee.

# How do I tell how big my picture is?

- If it's already on pbase:
  - Log into pbase.
  - View your gallery.
  - Click on “edit this gallery”
  - Scroll down beyond the header section.
  - The size is in the rightmost column.

# To see the size of pbase photos

Aedan Coffey Photo Gallery by Kilkenny Photographic Society at pbase.com - Windows Internet Explorer

http://upload.pbase.com/edit\_gallery/kilkenny\_photo\_society/aedan\_coffey





Norton Phishing Protection on Identity Safe Log-ins

Aedan Coffey Photo Gallery by Kilkenny P...

Create the gallery at root level.  After creating a gallery, you can describe it with a Title and a Description. While editing the gallery, any images you upload will appear in that gallery. By default, new galleries will be created at the root level, but if you uncheck the check box, the new gallery will be created inside this gallery. Either way, galleries can be moved around later.

### Make changes to the images within this gallery

show without thumbnails

Sequence	Select	Commands	Title	Thumbnail	Goto Size	Hits	Original
<input type="text" value="10"/>	<input type="checkbox"/>	edit set representative	<input type="text" value="Wicklow Gap in Winter"/>		small medium original	15	89654 bytes 800 x 566 pixels
<input type="text" value="20"/>	<input type="checkbox"/>	edit set representative	<input type="text" value="Nightfall"/>		small medium original	24	73865 bytes 800 x 532 pixels
<input type="text" value="30"/>	<input type="checkbox"/>	edit set representative	<input type="text" value="Wicklow Stream in Winter"/>		small medium original	55	92962 bytes 364 x 550 pixels
<input type="text" value="40"/>	<input type="checkbox"/>	edit set representative	<input type="text" value="Chicago Skyline"/>		small medium original	42	94749 bytes 532 x 800 pixels

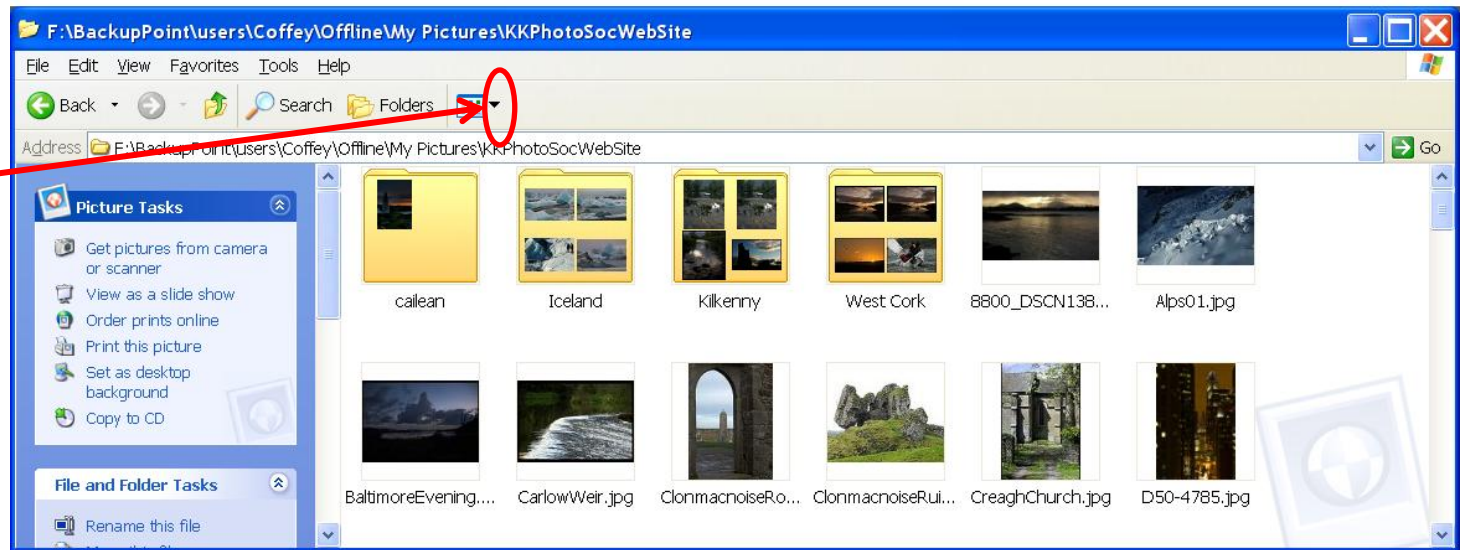
Internet 100%

# Size before uploading

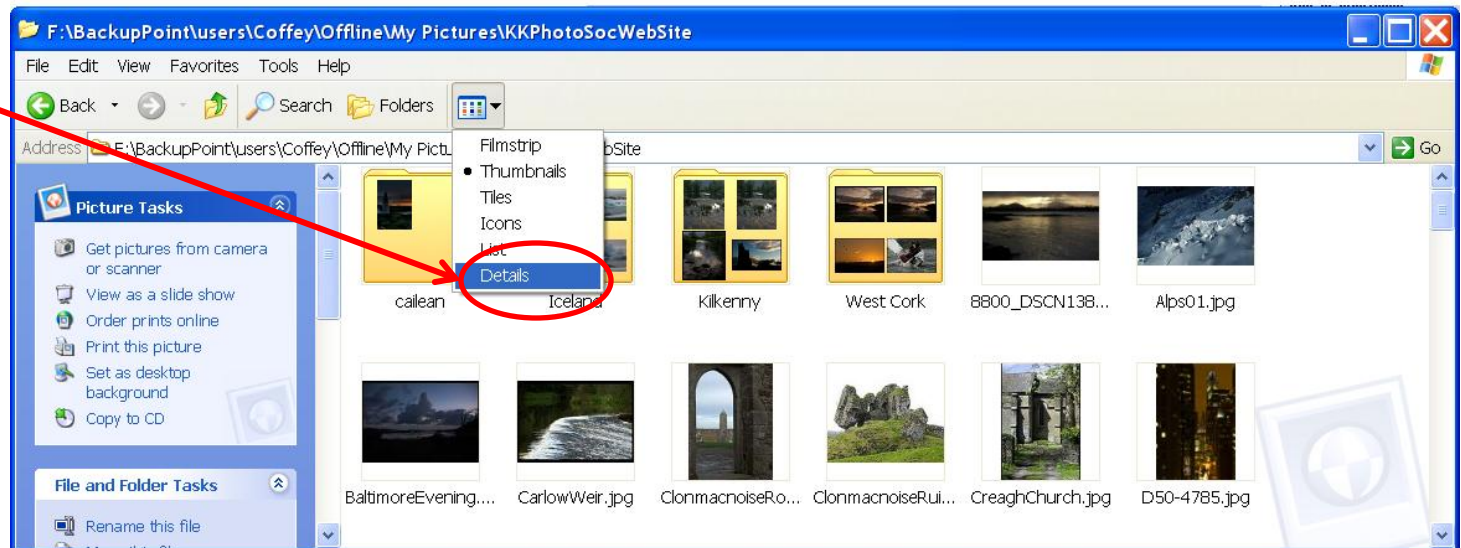
- It's easier to check and fix the file size before uploading to pbase.
- To check the size of a file on Windows
  - Open the folder it's in.
  - Select the detailed view, size is then in the second column.

# Size with Windows

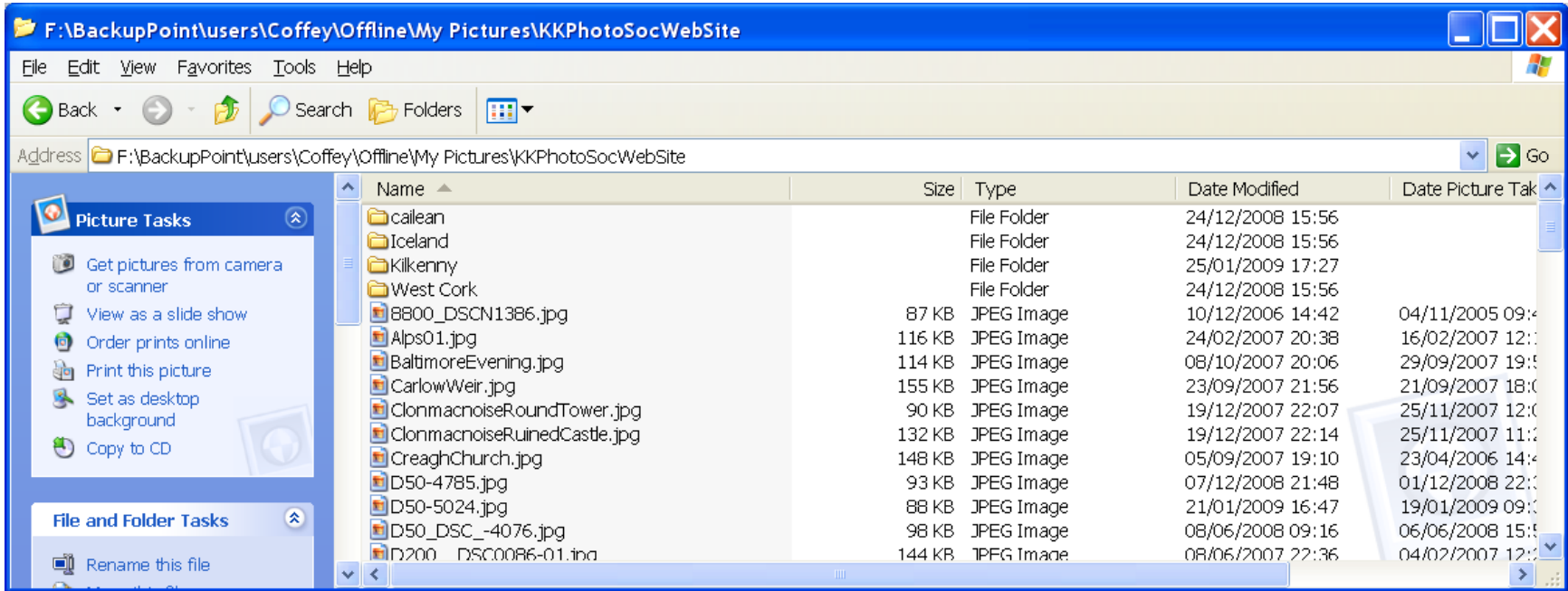
To select detailed view, first press here....



...then here.



# Size With Windows



The screenshot shows a Windows Explorer window titled "F:\BackupPoint\Users\Coffey\Offline\My Pictures\KKPhotoSocWebSite". The window displays a directory listing with the following columns: Name, Size, Type, Date Modified, and Date Picture Taken. The files listed are:

Name	Size	Type	Date Modified	Date Picture Taken
cailean		File Folder	24/12/2008 15:56	
Iceland		File Folder	24/12/2008 15:56	
Kilkenny		File Folder	25/01/2009 17:27	
West Cork		File Folder	24/12/2008 15:56	
8800_DSCN1386.jpg	87 KB	JPEG Image	10/12/2006 14:42	04/11/2005 09:4
Alps01.jpg	116 KB	JPEG Image	24/02/2007 20:38	16/02/2007 12:0
BaltimoreEvening.jpg	114 KB	JPEG Image	08/10/2007 20:06	29/09/2007 19:5
CarlowWeir.jpg	155 KB	JPEG Image	23/09/2007 21:56	21/09/2007 18:0
ClonmacnoiseRoundTower.jpg	90 KB	JPEG Image	19/12/2007 22:07	25/11/2007 12:0
ClonmacnoiseRuinedCastle.jpg	132 KB	JPEG Image	19/12/2007 22:14	25/11/2007 11:0
CreaghChurch.jpg	148 KB	JPEG Image	05/09/2007 19:10	23/04/2006 14:4
D50-4785.jpg	93 KB	JPEG Image	07/12/2008 21:48	01/12/2008 22:0
D50-5024.jpg	88 KB	JPEG Image	21/01/2009 16:47	19/01/2009 09:0
D50_DSC_-4076.jpg	98 KB	JPEG Image	08/06/2008 09:16	06/06/2008 15:5
D200_DSC0086-01.jpg	144 KB	JPEG Image	08/06/2007 22:36	04/02/2007 12:0

Note that each file size is now in the second column, for example Alps01.jpg is 116KB

# Getting the size right before uploading

- It's much quicker to sort out the file size **before** you upload to pbase!
- This section will show you how to do it with Picasa, a popular free image editing programme.
- I'm assuming you use a Windows PC, if you use a Mac talk to me later and I will help as much as I can.



Picasa is made by Google and is a very good basic free image editor. You can download it for from:

<http://picasa.google.com/>

# File sizes

- File sizes are determined by several factors
  - The type of image. A foggy black and white landscape will require less space than a razor sharp picture with strong colours.
  - The number of pixels in the file. For pbase we recommend 800 pixels across for landscape photos or 550 pixels high for portrait ones.
  - How much compression has been applied to the jpeg file. This presentation will concentrate on this.

# Open Picasa in Library Mode

To do this just Double click the Picasa icon on your desktop

The very first time you start up Picasa you need to answer some questions:

I suggest you ask it to just index “My Pictures” or “Pictures”, not the entire disk.

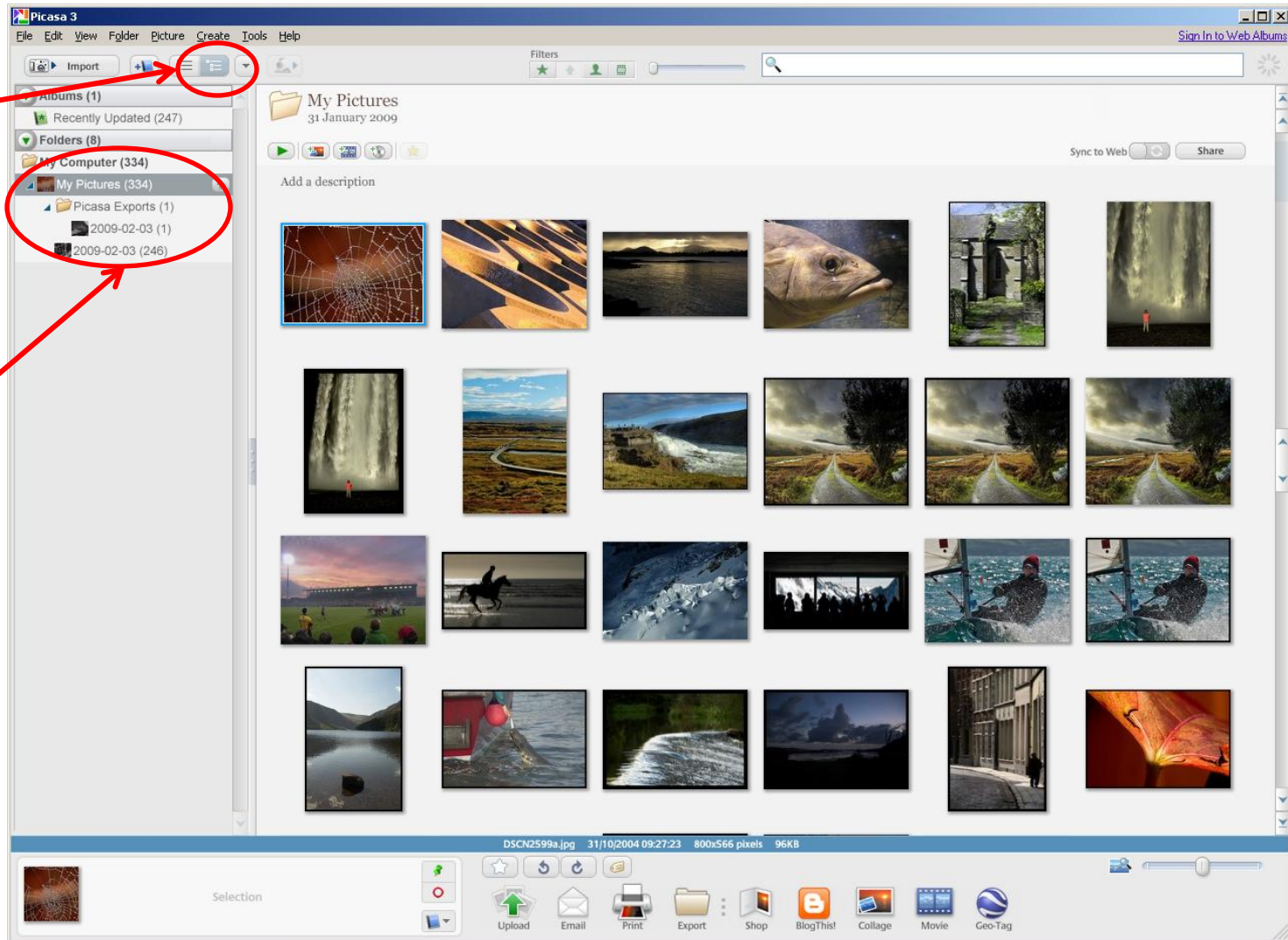
After this you might need to wait quite a while the first time you are using it, depending on how many images are on your computer. At this point Picasa is searching your computer for pictures, it only ever has to do this once.

# Picasa Library Mode View

Select the image you want to convert for Pbase

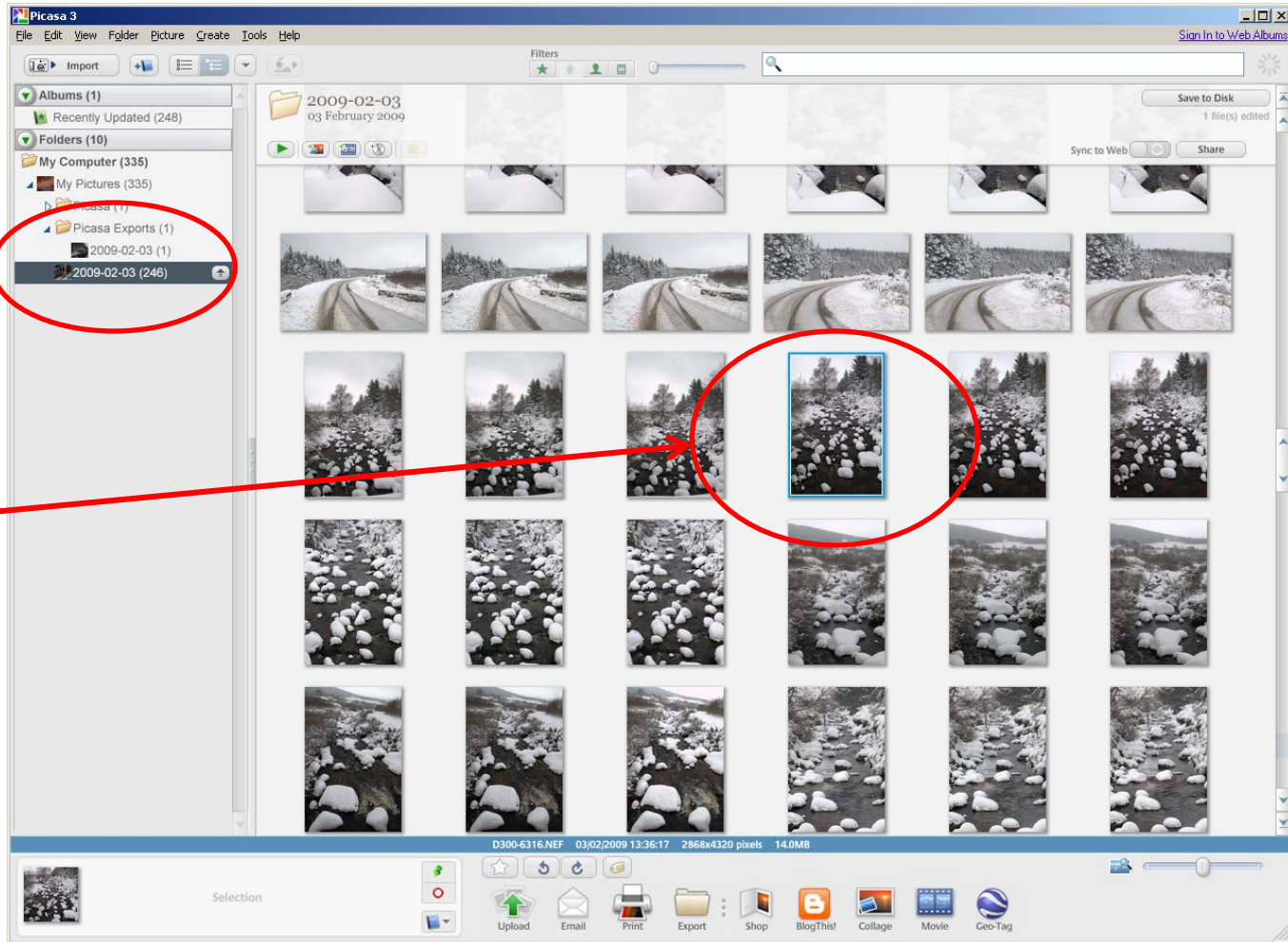
Press this button to see the folders as Windows shows them

Select the folder your image is in by clicking it here



# Select the image you want to resize

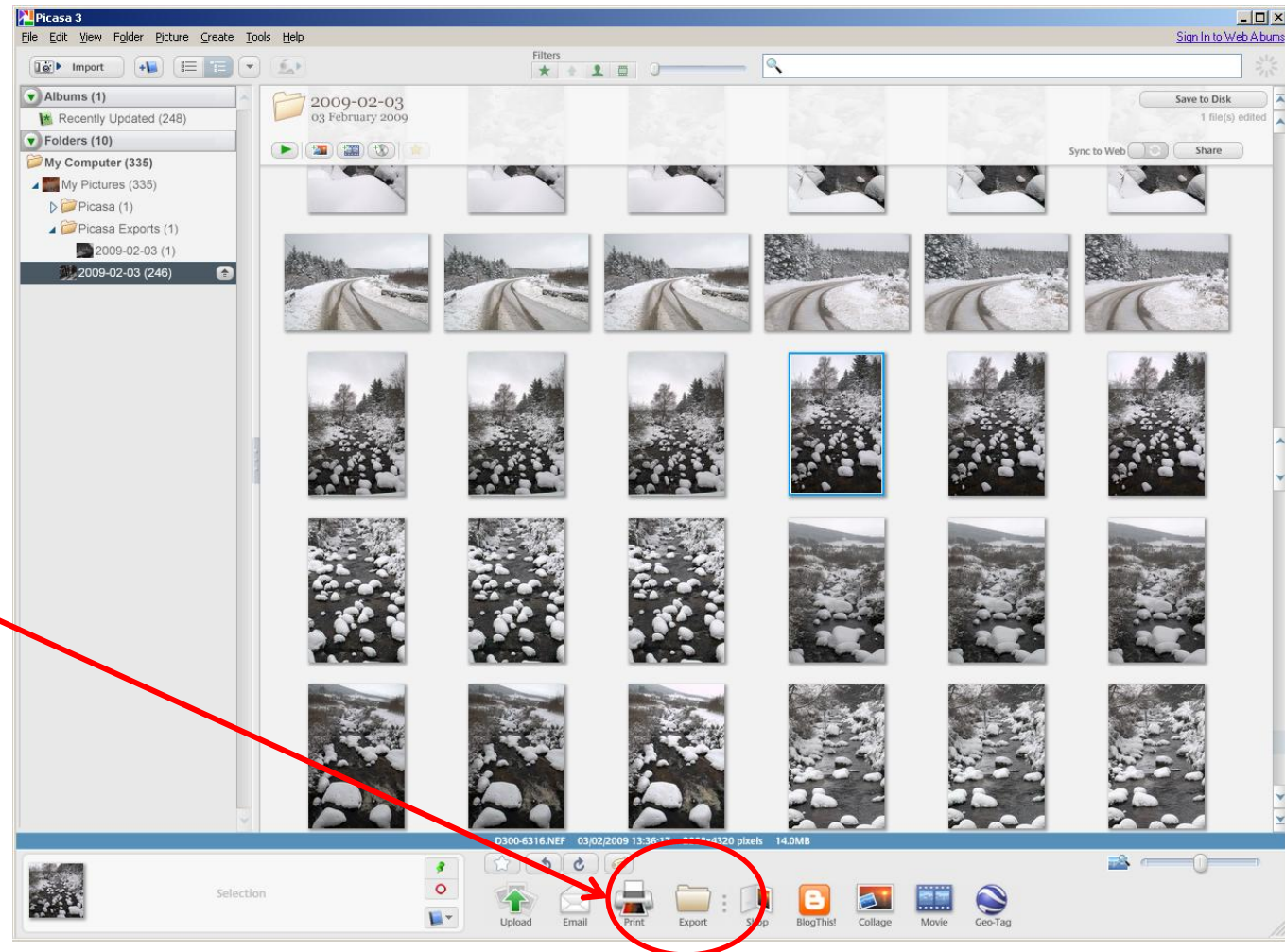
Select the folder your image is in by clicking it here



Select the image you want to resize by clicking on it once.

# Export the image

Start to export the image by clicking here



# Set the export options

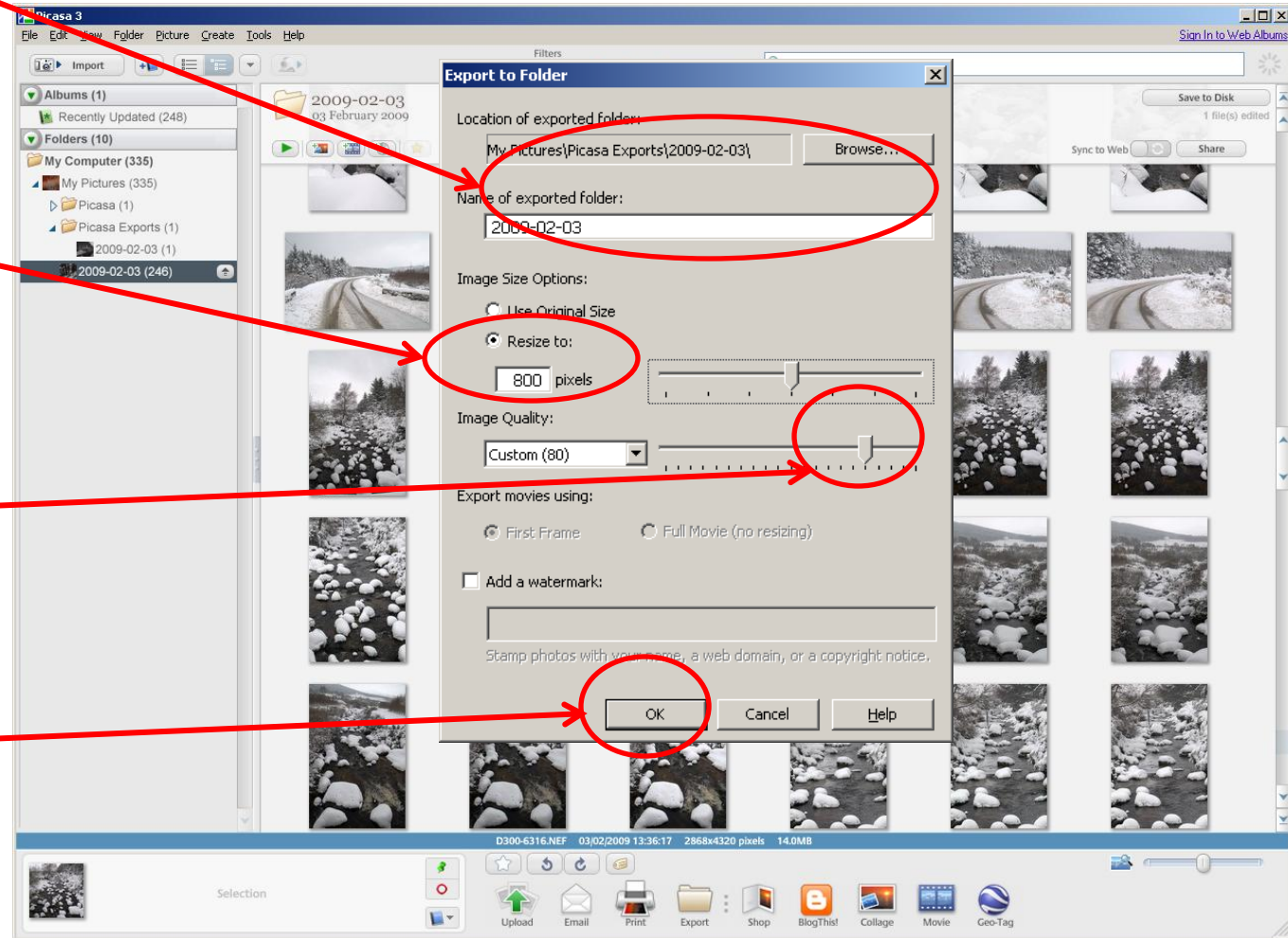
Picasa will remember these so you only have to set most of them once

Select the folder where you want the resized version to be written to

Set 800 here for landscape photos, 550 for portrait ones

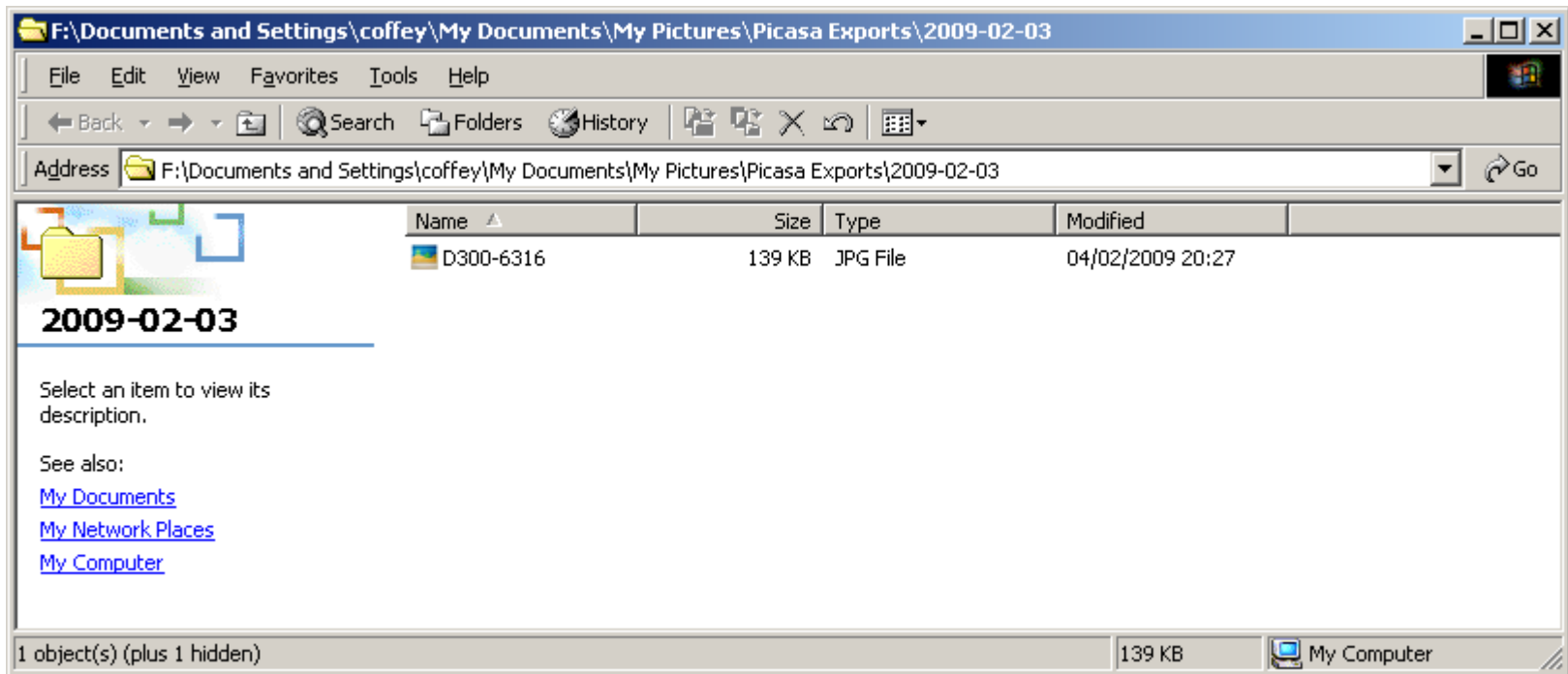
Start with a value of about 80 for the image quality, may have to change it later to get the desired file size

Finally, press OK when everything else is set.



# Check the file size

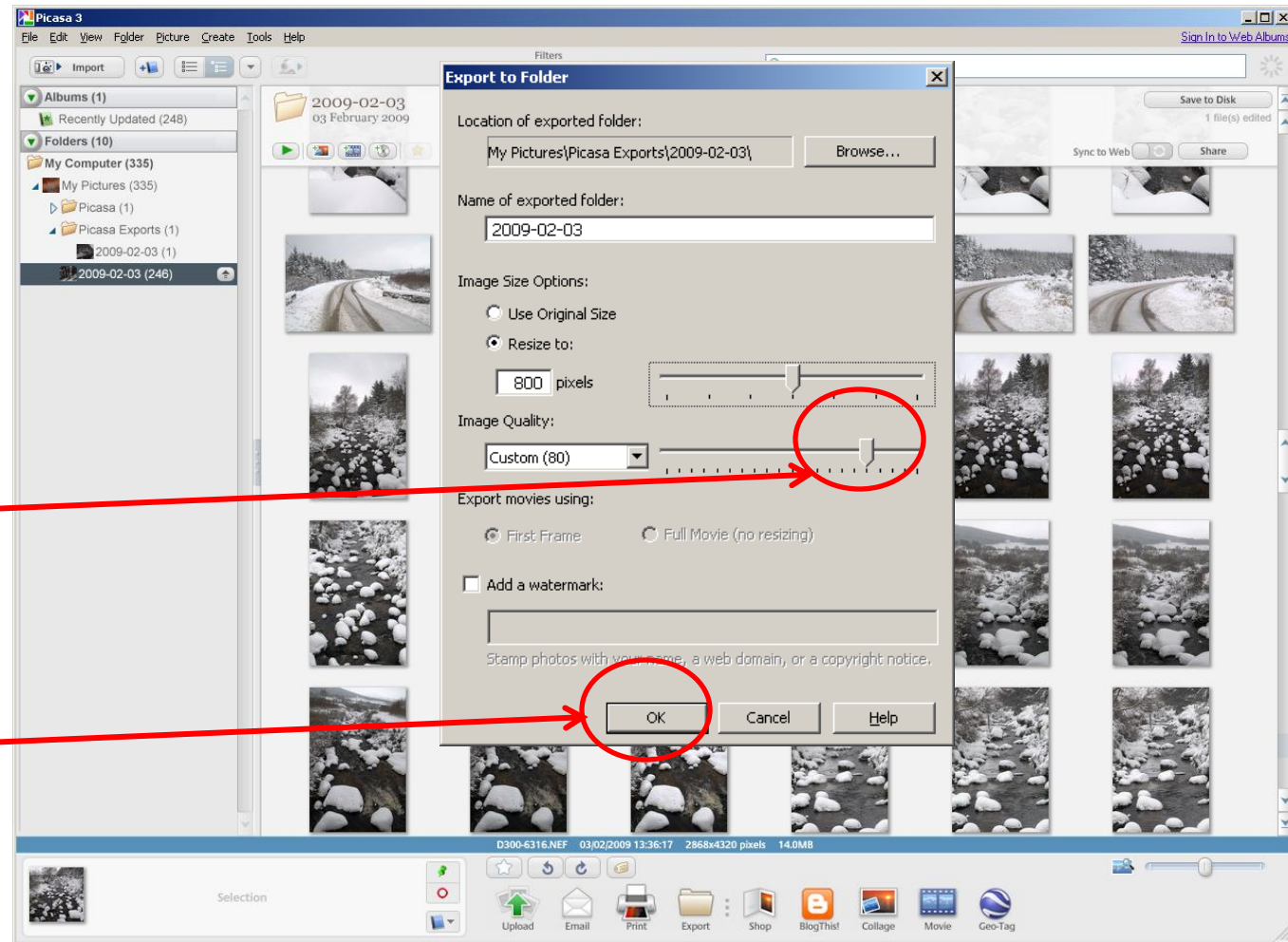
- When Picasa is finished it will automatically open up the folder that it has written the file to.
- Select the detail view as described earlier



- In this case we can see that the file is 139KB, which is too big. We need to write it again at slightly lower quality.

# Change the export options

Picasa will remember what you set last time so you only have to change the Image Quality slider

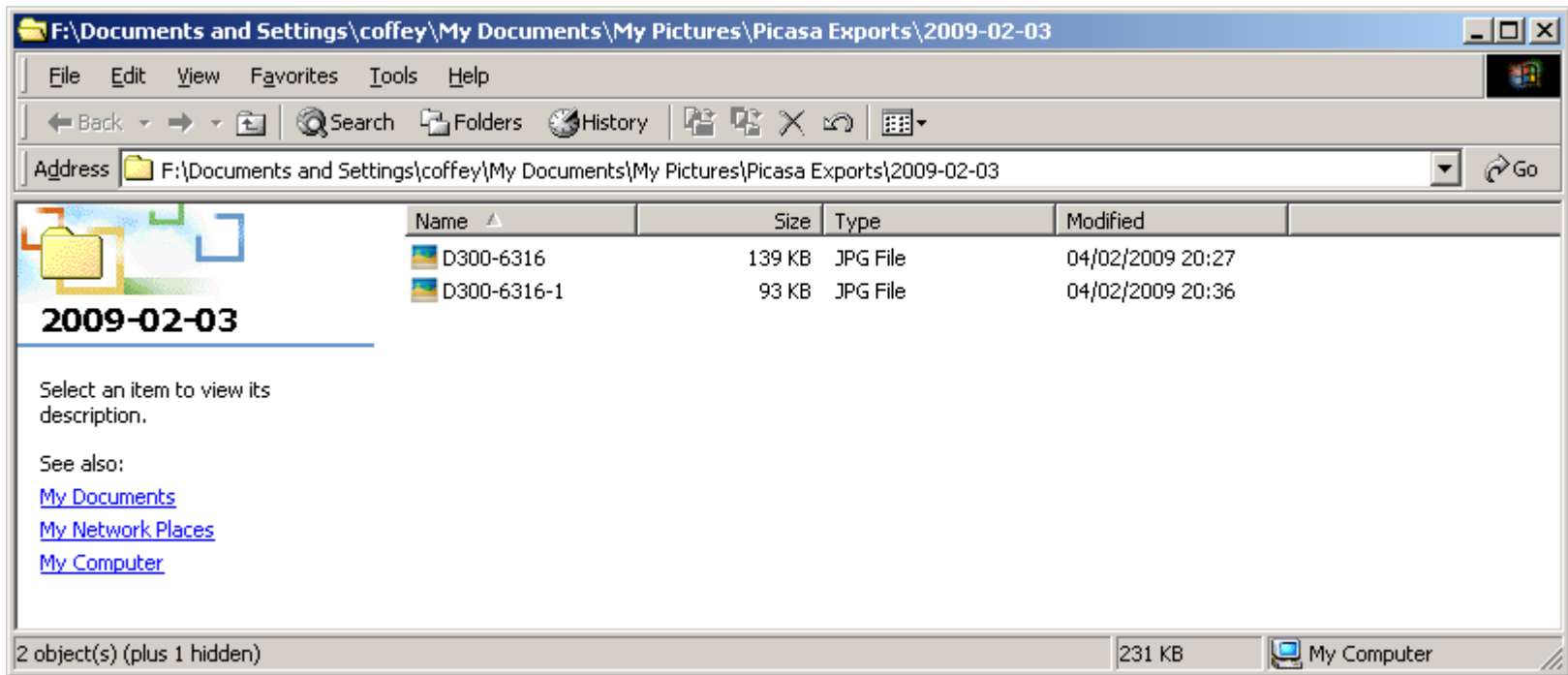


Decrease the value here to get a smaller file, increase it to get a higher quality file

When you have changed the quality setting press OK to write another file

# Check the file size again

- This time Picasa will append a number to the end of the file to differentiate it from the first attempt.



- In this case we can see that the second file is 93KB which is perfect. We can upload this one.
- Keep changing the image quality until you get a file that is OK. This may take several attempts and the final image quality may be different for different images.

# If you don't use Picasa?

- The basic approach is:
  - Resize to 800 wide or 550 high
  - Write a jpeg file
  - Check the size and if necessary write it again with different quality settings
- This same approach will work with
  - Paint Shop Pro
  - IrfanView
  - Elements
  - Photoshop
  - Lightroom
  - And probably many others too.....